

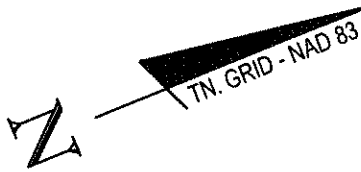
RESOLUTION NO. 30160

A RESOLUTION AUTHORIZING THE ACCEPTANCE OF THE FEE SIMPLE CONVEYANCE FROM CAMERON RIVERFRONT LAND, LLC TO THE CITY OF CHATTANOOGA OF A 2.173-ACRE PORTION OF TAX MAP NUMBER 135N-A-004, FURTHER IDENTIFIED IN THE FORM ATTACHED AS THE CITY PARCEL ON BARGE PROJECT 35658-07, AT AN APPRAISED VALUE OF ONE HUNDRED FORTY THOUSAND DOLLARS (\$140,000.00).

BE IT RESOLVED BY THE CITY COUNCIL OF THE CITY OF CHATTANOOGA, TENNESSEE, That it is hereby authorizing the acceptance of the fee simple conveyance from Cameron Riverfront Land, LLC to the City of Chattanooga of a 2.173-acre portion of Tax Map Number 135N-A-004, further identified in the form attached as the City parcel on Barge Project 35658-07, at an appraised value of \$140,000.00.

ADOPTED: December 10, 2019

/mem



NOTES:

THE ASSOCIATION PARCEL INCLUDES UNITS 1, 2 AND 3 OF THE CAMERON HARBOR MASTER CONDOMINIUM FILED FOR RECORD IN BOOK GI 10217, PAGE 377, BOOK GI 277, PAGE 1 AND BOOK GI _____ PAGE _____, IN THE REGISTER'S OFFICE FOR HAMILTON COUNTY, TENNESSEE.

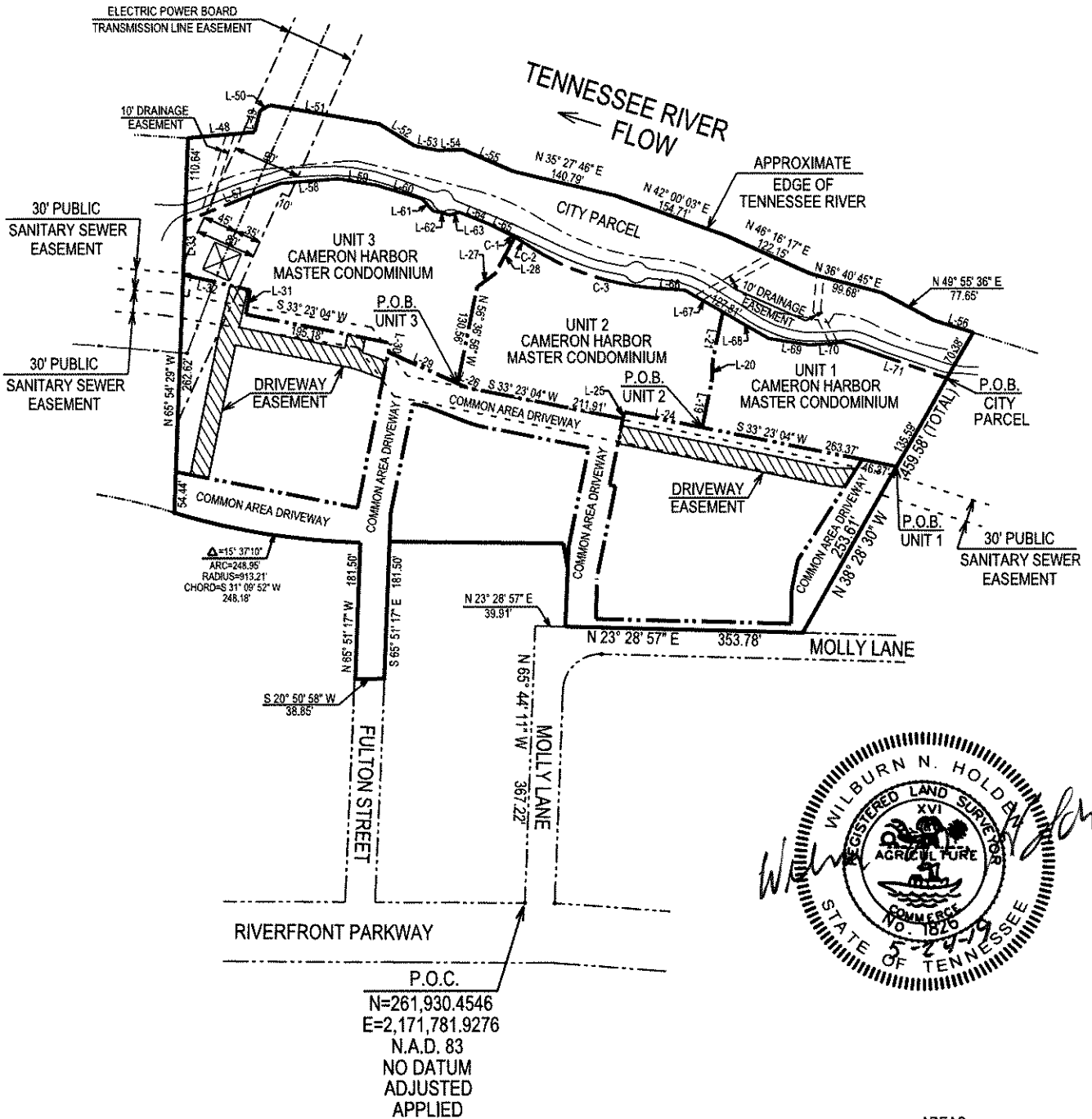


EXHIBIT "C"

AREAS
 UNIT 1 - 0.926± ACRES
 UNIT 2 - 1.332± ACRES
 UNIT 3 - 1.628± ACRES
 CITY PARCEL - 2.173± ACRES

BARGE
 DESIGN SOLUTIONS

1110 MARKET STREET, SUITE 200, CHATTANOOGA, TN. 37402
 PHONE: 423-756-3025 FAX: 423-756-8477

SITE PLAN

556 MOLLY LANE
 CHATTANOOGA, HAMILTON COUNTY, TENNESSEE

DRAWN BY: WNH	CHECKED BY: DBC
DRAWING NO.: SHEET 1 of 2	
PROJECT NO.: 35658-07	DATE: 05-24-2019

CURVE TABLE

CURVE	ARC	RADIUS	DELTA	BEARING	DISTANCE
CURVE C-1	8.08'	281.00'	01° 38' 55"	N 49° 38' 51" E	8.08'
CURVE C-2	22.32'	281.00'	04° 33' 05"	N 52° 44' 51" E	22.32'
CURVE C-3	177.01'	351.04'	28° 53' 31"	N 40° 34' 38" E	175.14'

LINE TABLE

LINE	BEARING	DISTANCE
LINE L-19	N 56° 36' 56" W	62.09'
LINE L-20	N 64° 28' 22" W	29.21'
LINE L-21	N 56° 36' 56" W	65.64'
LINE L-24	S 33° 23' 04" W	104.43'
LINE L-25	S 56° 36' 56" E	9.00'
LINE L-26	S 46° 09' 07" W	13.40'
LINE L-27	N 14° 29' 07" W	30.76'
LINE L-28	N 39° 58' 23" W	54.33'
LINE L-29	S 46° 09' 07" W	101.32'
LINE L-30	N 56° 36' 56" W	12.70'
LINE L-31	N 56° 35' 20" W	32.75'
LINE L-32	S 34° 54' 05" W	91.15'
LINE L-33	N 65° 54' 29" W	70.71'
LINE L-48	N 16° 56' 17" E	88.16'
LINE L-49	N 53° 59' 44" W	29.22'
LINE L-50	N 09° 11' 35" W	14.67'
LINE L-51	N 31° 51' 01" E	146.98'
LINE L-52	N 53° 43' 19" E	56.15'
LINE L-53	N 32° 33' 44" E	29.94'
LINE L-54	N 20° 54' 29" E	34.38'
LINE L-55	N 45° 08' 52" E	72.59'
LINE L-56	N 39° 22' 16" E	54.06'
LINE L-57	N 00° 05' 59" E	135.91'
LINE L-58	N 17° 35' 37" E	76.16'
LINE L-59	N 31° 56' 45" E	49.75'
LINE L-60	N 38° 27' 02" E	64.30'
LINE L-61	N 67° 54' 59" E	22.12'
LINE L-62	N 35° 47' 23" E	23.31'
LINE L-63	N 06° 25' 49" E	13.47'
LINE L-64	N 43° 46' 13" E	40.68'
LINE L-65	N 48° 49' 24" E	31.90'
LINE L-66	N 26° 07' 52" E	40.09'
LINE L-67	N 52° 03' 21" E	57.64'
LINE L-68	N 52° 03' 21" E	70.17'
LINE L-69	N 31° 09' 58" E	55.67'
LINE L-70	N 17° 31' 04" E	45.24'
LINE L-71	N 41° 14' 25" E	145.32'

EXHIBIT "C"



1110 MARKET STREET, SUITE 200, CHATTANOOGA, TN. 37402
 PHONE: 423-756-3025 FAX: 423-756-8477

SITE PLAN

556 MOLLY LANE
 CHATTANOOGA, HAMILTON COUNTY, TENNESSEE

DRAWN BY: WNH	CHECKED BY: DBC
DRAWING NO.: SHEET 2 of 2	
PROJECT NO.: 35658-07	DATE: 05-24-2019